

# NATIONAL HISTORIC LANDMARK NOMINATION

NPS Form 10-934 (Rev. 12-2015)

OMB Control No. 1024-0276 (Exp. 01/31/2019)

## **E.I. COUSE HOUSE AND STUDIO AND J.H. SHARP STUDIOS**

**Page 1**

United States Department of the Interior, National Park Service

National Historic Landmarks Nomination Form

---

### **Figures Log**

Location Map

Boundary Map

Site Map

Floor Plan: Couse House and Studio and Juan De Luna Chapel-First Sharp Studio

Floor Plan: Second Sharp Studio

Photograph Location Map – Exterior

Photograph Location Map – Interior, Couse House and Studio and Juan De Luna Chapel-First Sharp Studio

Photograph Location Map – Interior, Second Sharp Studio

Historic Figure 1: Excerpt from Sanborn Fire Insurance Map, Taos, New Mexico, October 1929

# NATIONAL HISTORIC LANDMARK NOMINATION

NPS Form 10-934 (Rev. 12-2015)

OMB Control No. 1024-0276 (Exp. 01/31/2019)

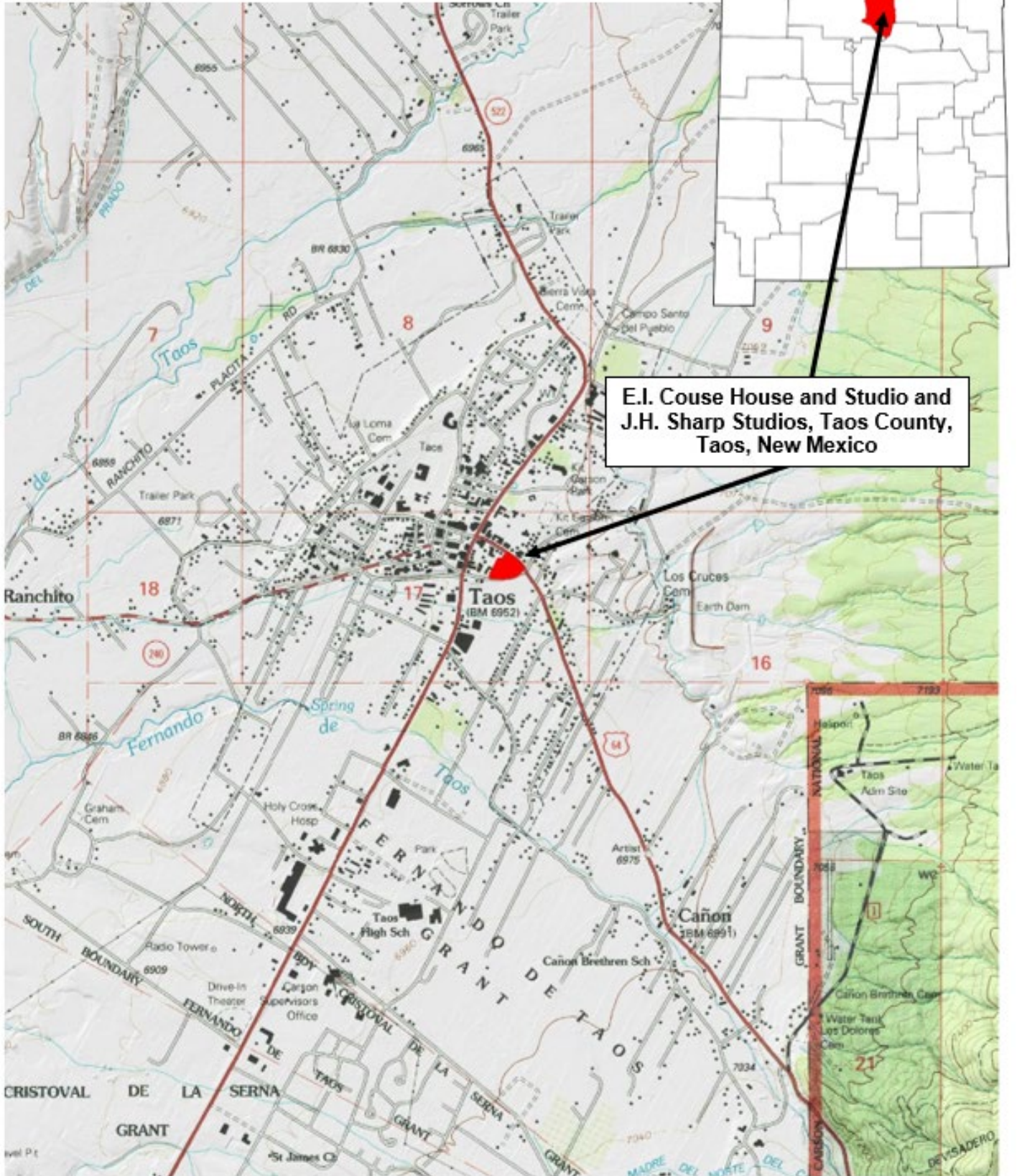
## E.I. COUSE HOUSE AND STUDIO AND J.H. SHARP STUDIOS

Page 2

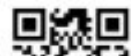
United States Department of the Interior, National Park Service

National Historic Landmarks Nomination Form

### LOCATION MAP



Mercator Projection  
WGS84



NATIONAL HISTORIC LANDMARK NOMINATION

NPS Form 10-934 (Rev. 12-2015)

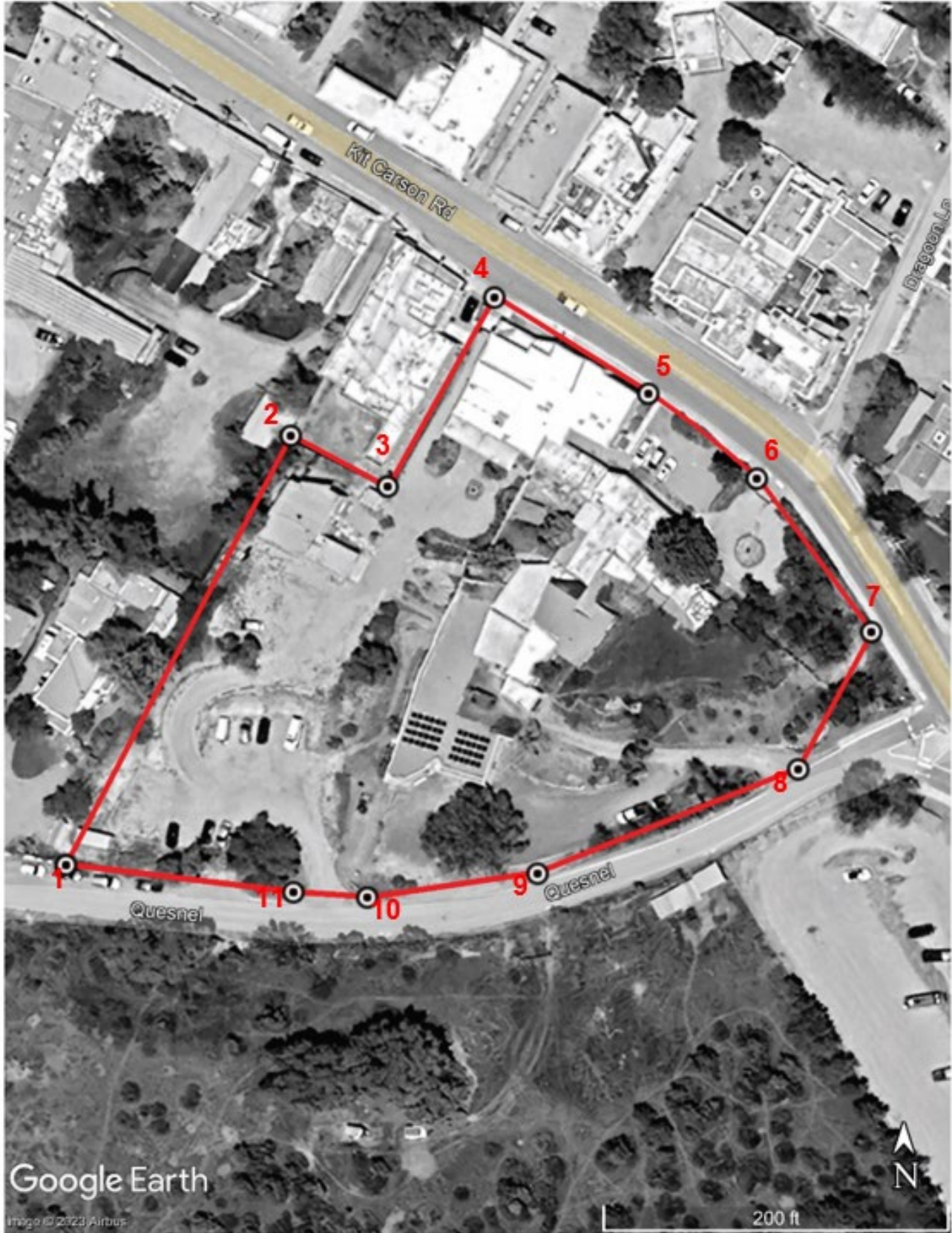
OMB Control No. 1024-0276 (Exp. 01/31/2019)

E.I. COUSE HOUSE AND STUDIO AND J.H. SHARP STUDIOS

United States Department of the Interior, National Park Service

National Historic Landmarks Nomination Form

BOUNDARY MAP



Red polygon is the nominated area

Image Date: May 2023

NATIONAL HISTORIC LANDMARK NOMINATION

NPS Form 10-934 (Rev. 12-2015)

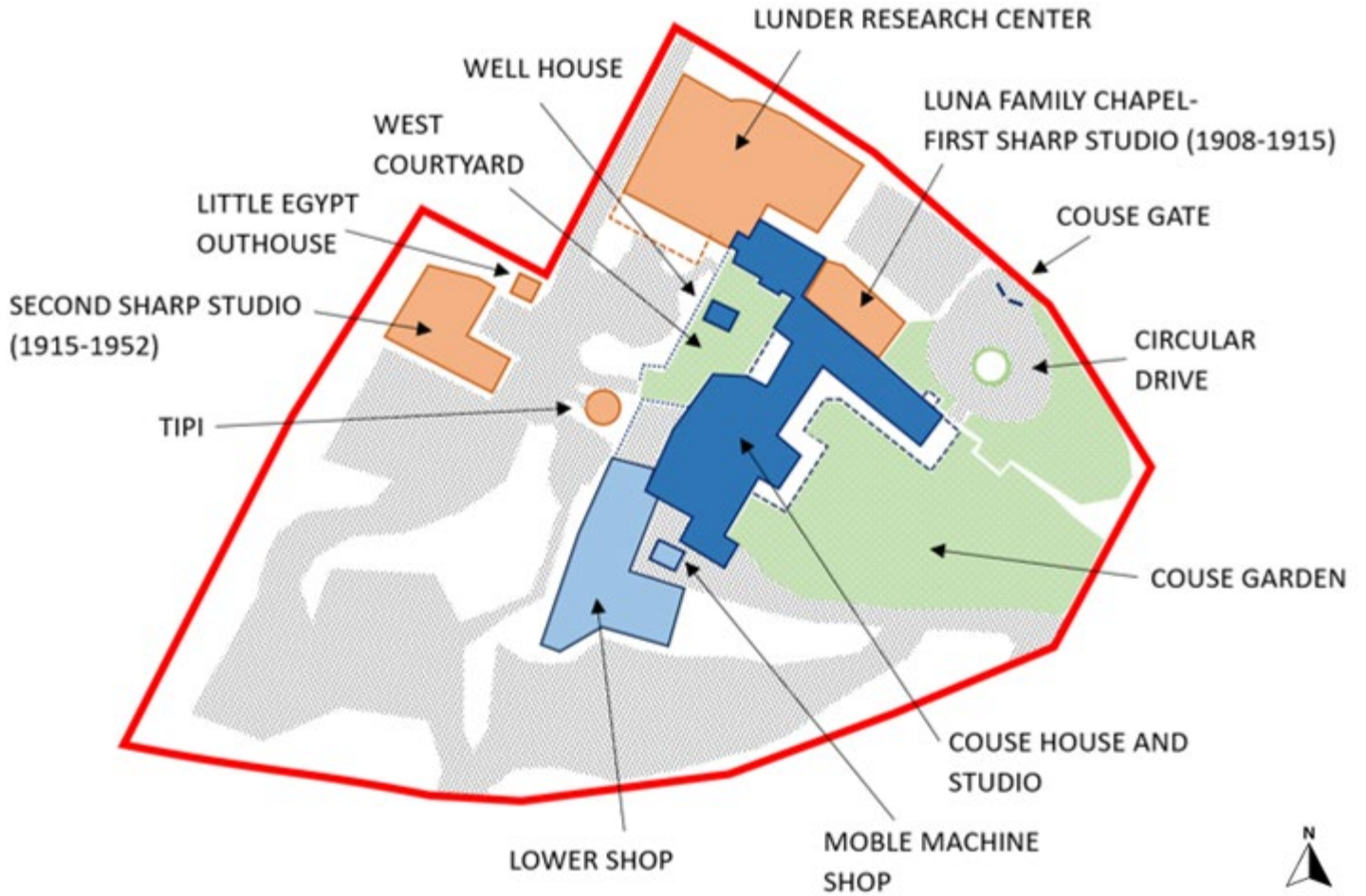
OMB Control No. 1024-0276 (Exp. 01/31/2019)

E.I. COUSE HOUSE AND STUDIO AND J.H. SHARP STUDIOS

United States Department of the Interior, National Park Service

National Historic Landmarks Nomination Form

SITE MAP



# NATIONAL HISTORIC LANDMARK NOMINATION

NPS Form 10-934 (Rev. 12-2015)

OMB Control No. 1024-0276 (Exp. 01/31/2019)

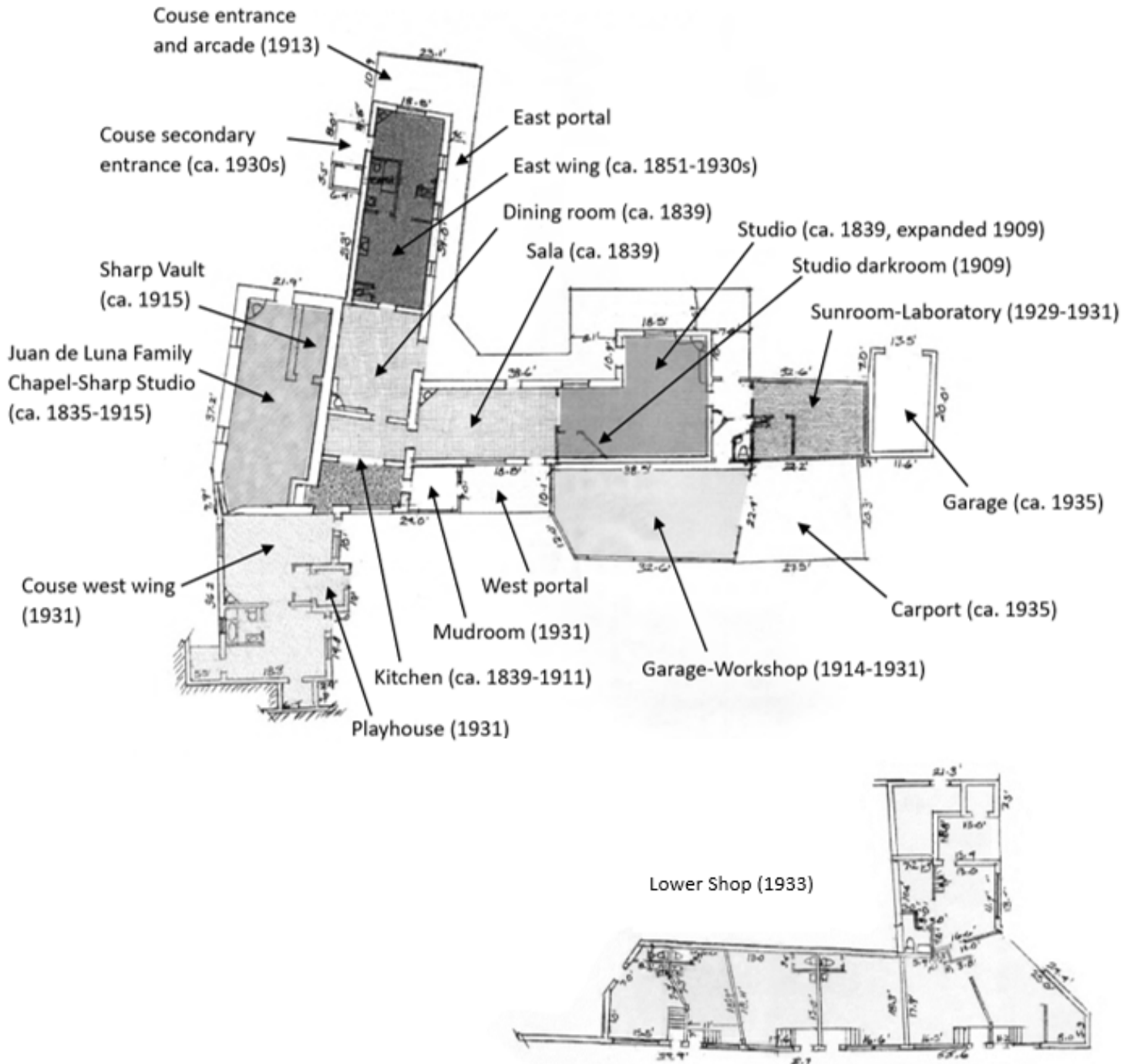
## E.I. COUSE HOUSE AND STUDIO AND J.H. SHARP STUDIOS

Page 5

United States Department of the Interior, National Park Service

National Historic Landmarks Nomination Form

### FLOOR PLAN: COUSE HOUSE AND STUDIO AND JUAN DE LUNA CHAPEL-SHARP STUDIO



Not to Scale. Adapted from Eanger Irving Couse House and Studio and Joseph Henry Sharp Studios National Register Nomination, 2005.

NATIONAL HISTORIC LANDMARK NOMINATION

NPS Form 10-934 (Rev. 12-2015)

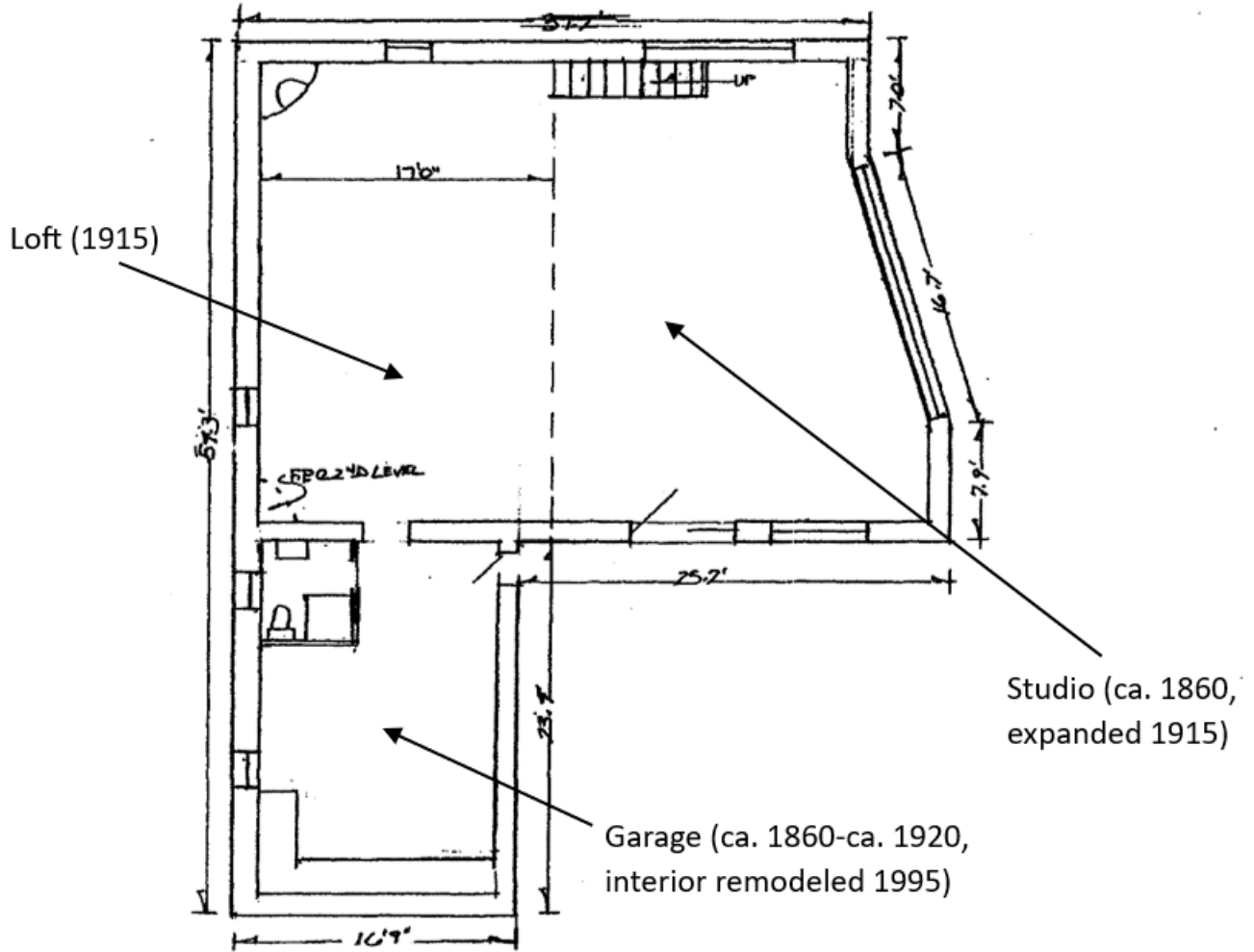
OMB Control No. 1024-0276 (Exp. 01/31/2019)

E.I. COUSE HOUSE AND STUDIO AND J.H. SHARP STUDIOS

United States Department of the Interior, National Park Service

National Historic Landmarks Nomination Form

FLOOR PLAN: SECOND SHARP STUDIO



Not to Scale. Adapted from Eanger Irving Couse House and Studio and Joseph Henry Sharp Studios National Register Nomination, 2005.

NATIONAL HISTORIC LANDMARK NOMINATION

NPS Form 10-934 (Rev. 12-2015)

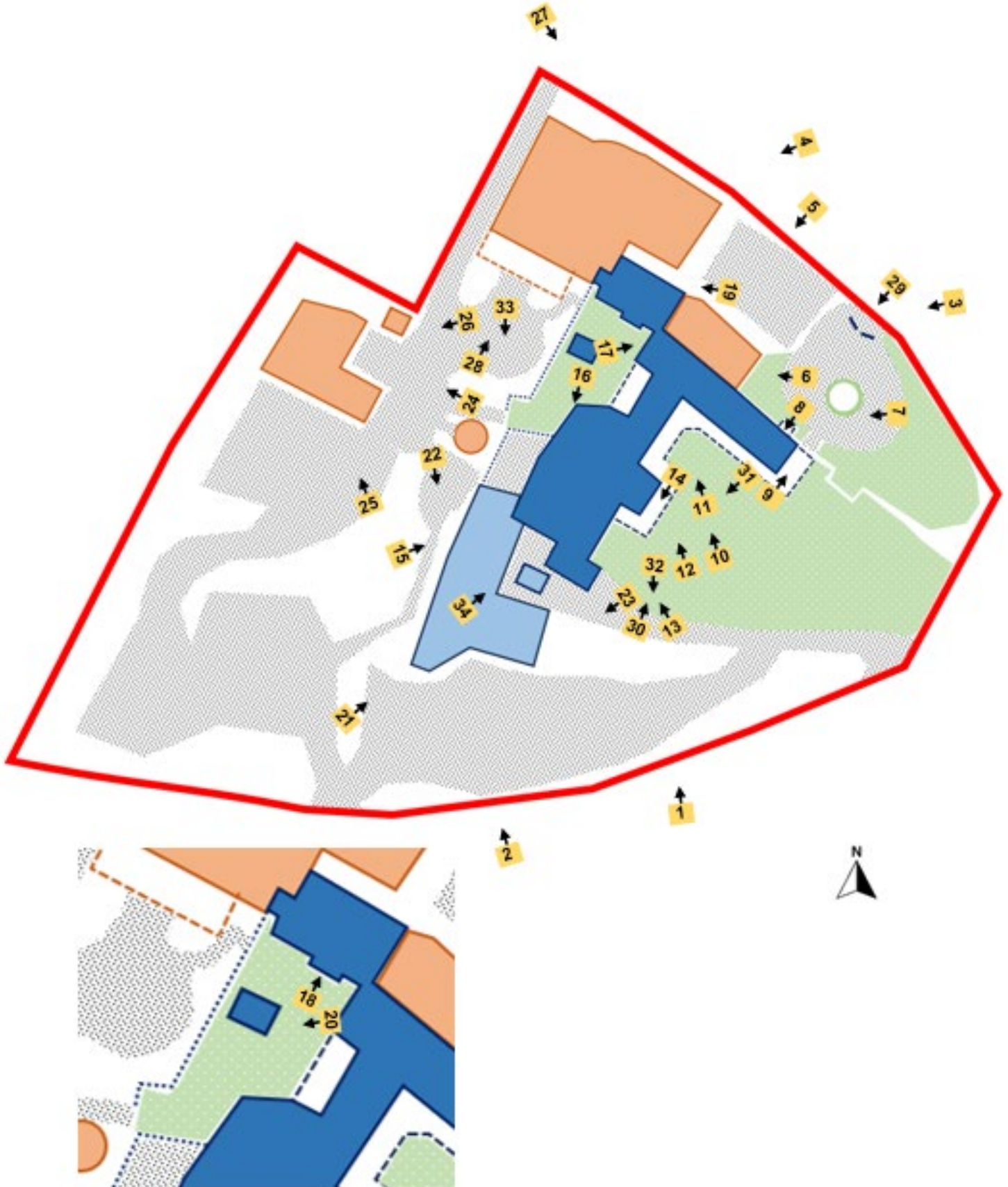
OMB Control No. 1024-0276 (Exp. 01/31/2019)

E.I. COUSE HOUSE AND STUDIO AND J.H. SHARP STUDIOS

United States Department of the Interior, National Park Service

National Historic Landmarks Nomination Form

PHOTOGRAPH LOCATION MAP – EXTERIOR



NATIONAL HISTORIC LANDMARK NOMINATION

NPS Form 10-934 (Rev. 12-2015)

OMB Control No. 1024-0276 (Exp. 01/31/2019)

E.I. COUSE HOUSE AND STUDIO AND J.H. SHARP STUDIOS

United States Department of the Interior, National Park Service

National Historic Landmarks Nomination Form

PHOTOGRAPH LOCATION MAP – INTERIOR, COUSE HOUSE AND STUDIO AND JUAN DE LUNA CHAPEL-FIRST SHARP STUDIO





NATIONAL HISTORIC LANDMARK NOMINATION

NPS Form 10-934 (Rev. 12-2015)

OMB Control No. 1024-0276 (Exp. 01/31/2019)

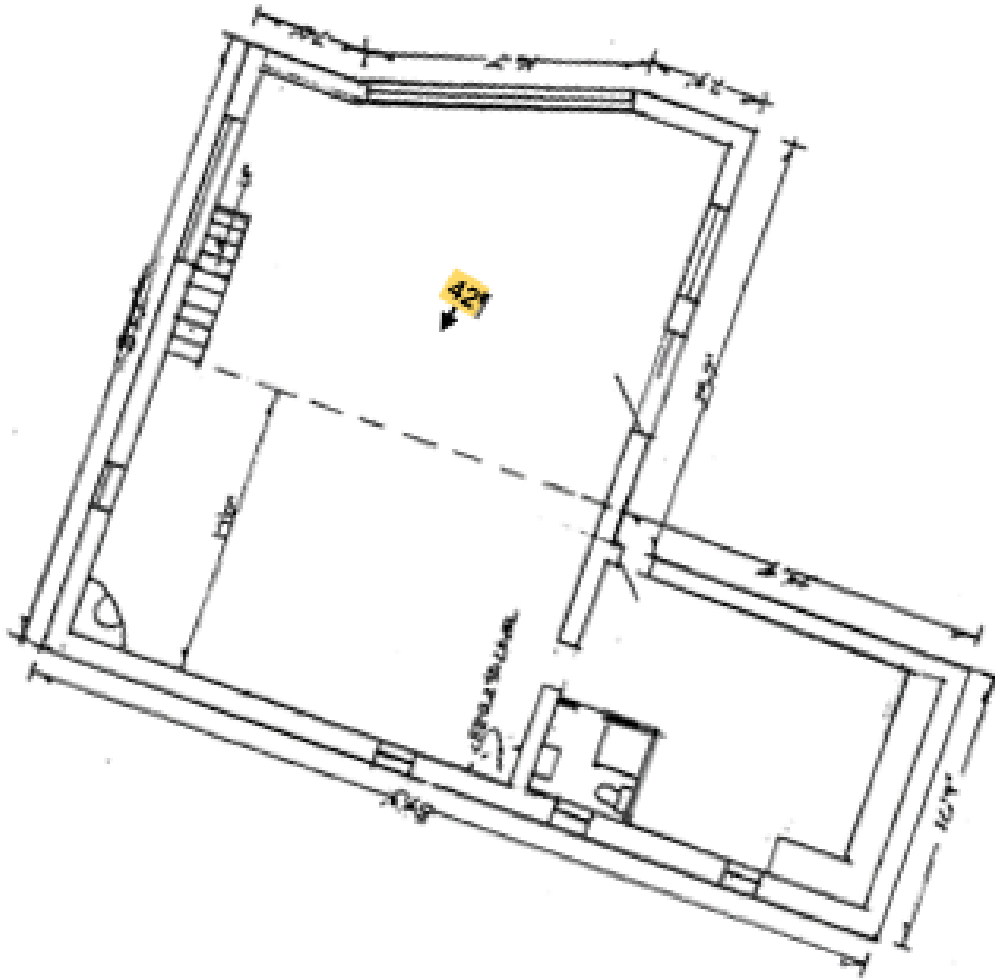
E.I. COUSE HOUSE AND STUDIO AND J.H. SHARP STUDIOS

Page 9

United States Department of the Interior, National Park Service

National Historic Landmarks Nomination Form

PHOTOGRAPH LOCATION MAP – INTERIOR, SECOND SHARP STUDIO



# NATIONAL HISTORIC LANDMARK NOMINATION

NPS Form 10-934 (Rev. 12-2015)

OMB Control No. 1024-0276 (Exp. 01/31/2019)

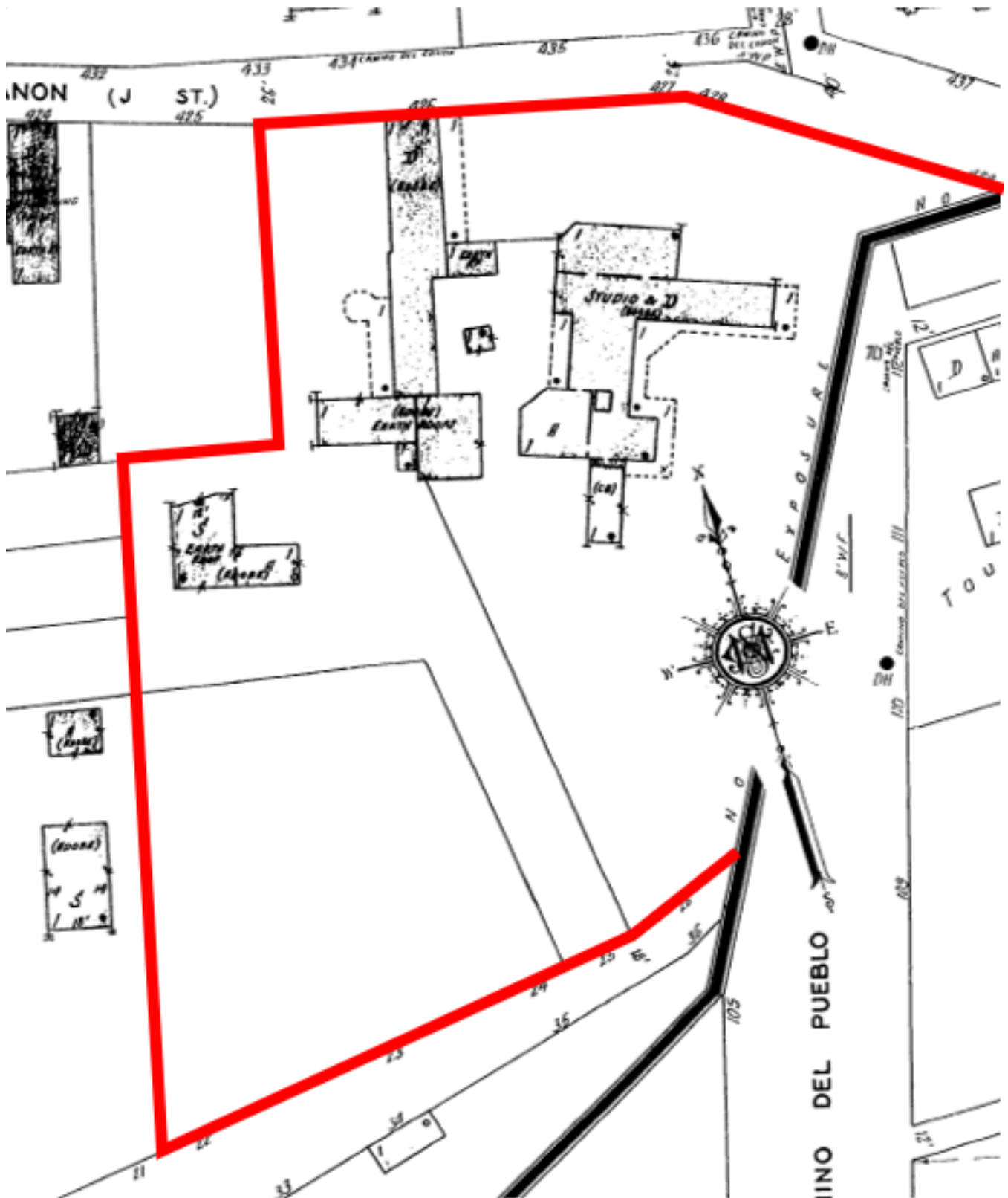
## E.I. COUSE HOUSE AND STUDIO AND J.H. SHARP STUDIOS

Page 10

United States Department of the Interior, National Park Service

National Historic Landmarks Nomination Form

### HISTORIC FIGURES



Excerpt from Sanborn Fire Insurance Map, Taos, New Mexico, October 1929. The easternmost portion of the property was not included, remainder of nomination boundary indicated in red.