

United States Department of the Interior
National Park Service

APR 2013 CPRC Review Public Draft
Revised Boundary IAW recent NRHP mapping guidance

National Register of Historic Places Registration Form

**Locational Information redacted IAW
State and National regulations for the
protection of sensitive cultural resources.**

This form is for use in nominating or requesting determinations for individual properties and districts. See instructions in National Register Bulletin, *How to Complete the National Register of Historic Places Registration Form*. If any item does not apply to the property being documented, enter "N/A" for "not applicable." For functions, architectural classification, materials, and areas of significance, enter only categories and subcategories from the instructions. **Place additional certification comments, entries, and narrative items on continuation sheets if needed (NPS Form 10-900a).**

1. Name of Property Santa Fe Trail: Mora County Segment North of Wagon Mound

historic name _____

other names/site number _____

2. Location

street & number N/A _____

X	not for publication
X	vicinity

city or town [REDACTED] _____

state New Mexico code NM county Mora code 033 zip code 87752

3. State/Federal Agency Certification

As the designated authority under the National Historic Preservation Act, as amended,
I hereby certify that this X **nomination** request for determination of eligibility meets the documentation standards for registering properties in the National Register of Historic Places and meets the procedural and professional requirements set forth in 36 CFR Part 60.

In my opinion, the property X **meets** does not meet the National Register Criteria. I recommend that this property be considered significant at the following level(s) of significance:

X **national** X **statewide** X **local**

Signature of certifying official/Title _____ Date _____

State or Federal agency/bureau or Tribal Government _____

In my opinion, the property ___ meets ___ does not meet the National Register criteria.

Signature of commenting official _____ Date _____

Title _____ State or Federal agency/bureau or Tribal Government _____

4. National Park Service Certification

I hereby certify that this property is:

- ___ entered in the National Register
- ___ determined eligible for the National Register
- ___ determined not eligible for the National Register
- ___ removed from the National Register
- ___ other (explain:) _____

Signature of the Keeper _____ Date of Action _____

Santa Fe Trail: Mora County Segment North of Wagon Mound
Name of Property

Mora, New Mexico
County and State

5. Classification

Ownership of Property
(Check as many boxes as apply.)

Category of Property
(Check only **one** box.)

Number of Resources within Property
(Do not include previously listed resources in the count.)

<input type="checkbox"/>	private
<input type="checkbox"/>	public - Local
<input checked="" type="checkbox"/>	public - State
<input type="checkbox"/>	public - Federal

<input type="checkbox"/>	building(s)
<input type="checkbox"/>	district
<input checked="" type="checkbox"/>	site
<input type="checkbox"/>	structure
<input type="checkbox"/>	object

Contributing	Noncontributing	
		buildings
1		sites
		structures
		objects
1		Total

Name of related multiple property listing
(Enter "N/A" if property is not part of a multiple property listing)

Number of contributing resources previously listed in the National Register

Historic Resources of the Santa Fe Trail, 1821-1880

0

6. Function or Use

Historic Functions

(Enter categories from instructions.)

TRANSPORTATION / road-related

TRANSPORTATION / pedestrian-related

COMMERCE/TRADE

LANDSCAPE/unoccupied land

Current Functions

(Enter categories from instructions.)

LANDSCAPE/unoccupied land

AGRICULTURE/agricultural field

7. Description

Architectural Classification

(Enter categories from instructions.)

N/A

Materials

(Enter categories from instructions.)

foundation: N/A

walls: N/A

roof: N/A

other: N/A

Santa Fe Trail: Mora County Segment North of Wagon Mound
Name of Property

Mora, New Mexico
County and State

Narrative Description

(Describe the historic and current physical appearance of the property. Explain contributing and noncontributing resources if necessary. Begin with a **summary paragraph** that briefly describes the general characteristics of the property, such as its location, setting, size, and significant features.)

Summary Paragraph [location information redacted IAW federal and state regulations].

The **Mora County Segment North of Wagon Mound** site is a remnant of the Santa Fe Trail [redacted] of the town of Wagon Mound, in Mora County, New Mexico. The site is [redacted] of Wagon Mound butte, a prominent landmark on the Santa Fe Trail after which the town of Wagon Mound was named. The Wagon Mound butte, together with Santa Clara Spring about two miles northwest of the butte, was designated a National Historic Landmark in 1963 (NRN 430614). The butte rises to an elevation of 6,930 feet, and has a distinctive presence on the horizon when viewed from the North of Wagon Mound trail segment. A segment of the Cimarron Route of the Santa Fe Trail, the Mora County Segment North of Wagon Mound site [redacted], and covers a trail distance of about [redacted]. This segment consists of up to six parallel swales or ruts on the ground, [redacted] representing alternate routes across the landscape and the tendency of wagon trains to travel across the countryside in a column with more than one wagon across each row. Most of the landscape surrounding the North of Wagon Mound segment is open ranchland. A few home sites, water storage tanks, and fences are in view from the site, but at such a distance that they do not detract from the overwhelming sense of being on a vast, empty prairie. In addition, the view south towards Wagon Mound still evokes a powerful sense of being drawn towards an important and distant landmark.

Narrative Description

The **Mora County Segment North of Wagon Mound** site is a remnant of the Santa Fe Trail [redacted] of the town of Wagon Mound, in Mora County, New Mexico. The site is [redacted] of Wagon Mound butte, a prominent landmark on the Santa Fe Trail after which the town of Wagon Mound was named. The butte rises to an elevation of 6,930 feet, and has a distinctive presence on the horizon when viewed from the Mora County Segment North of Wagon Mound site. The butte's profile when viewed from the Trail near the North of Wagon Mound site reminded at least one early traveler of a Conestoga wagon heading into the southwest pulled by a team of oxen. The Wagon Mound butte, together with the Santa Clara Spring about two miles to the northwest of the butte, was designated a National Historic Landmark in 1963 (NRN 430614).

As part of the Cimarron Route of the Santa Fe Trail, the Mora County Segment North of Wagon Mound site [redacted] [redacted] of the Rock Crossing of the Canadian River (El Vado de las Piedras National Register site). From the Canadian River crossing to the site, and from the site to Wagon Mound, the trail crosses a nearly flat prairie that gradually ascends from approximately 5,700 feet in elevation at the Canadian River crossing to 6,400 feet in elevation at the base of the Wagon Mound butte. This segment consists of up to six parallel swales or ruts on the ground, [redacted] [redacted] representing alternate routes across the landscape and the tendency of wagon trains to travel across the countryside in a column with more than one wagon across each row. The swales across the site are clearly visible both on the ground and in aerial photos. They are relatively undisturbed, except for evidence of cattle grazing, and retain historic integrity. Surface investigation yielded no visible historic artifacts.

Most of the landscape surrounding the North of Wagon Mound segment is open ranchland. The surrounding landscape, as well as the site itself, has been grazed by cattle for over a century. Plant species evident today include yucca, prickly pear, barrel cactus, buffalo grass, sand dropseed, ring muhly grass, prairie sage, Indian paint brush, a few three-leaf sumac, and juniper and snake weed on the escarpments. All would have been present during the period of significance for the Santa Fe Trail, though perhaps not in the same proportions due to the grazing.

The views from the site are similar to what they were during the period of significance, with the feeling of unoccupied prairie land extending towards distant mesas and buttes on the horizon. There is no modern construction on the site, and its view shed also retains high historic integrity. A few home sites, water storage tanks, and fences are in view, but at such a distance that they do not detract significantly from the overwhelming sense of being on a vast, empty prairie. The view south towards Wagon Mound still evokes a powerful sense of being drawn towards an important and distant landmark.

Santa Fe Trail: Mora County Segment North of Wagon Mound
Name of Property

Mora, New Mexico
County and State

8. Statement of Significance

Applicable National Register Criteria

(Mark "x" in one or more boxes for the criteria qualifying the property for National Register listing.)

- A Property is associated with events that have made a significant contribution to the broad patterns of our history.
- B Property is associated with the lives of persons significant in our past.
- C Property embodies the distinctive characteristics of a type, period, or method of construction or represents the work of a master, or possesses high artistic values, or represents a significant and distinguishable entity whose components lack individual distinction.
- D Property has yielded, or is likely to yield, information important in prehistory or history.

Criteria Considerations

(Mark "x" in all the boxes that apply.)

Property is:

- A Owned by a religious institution or used for religious purposes.
- B removed from its original location.
- C a birthplace or grave.
- D a cemetery.
- E a reconstructed building, object, or structure.
- F a commemorative property.
- G less than 50 years old or achieving significance within the past 50 years.

Areas of Significance

(Enter categories from instructions.)

Criterion A & D: TRANSPORTATION

Criterion A & D: COMMERCE

Criterion A: MILITARY

Criterion D: ARCHEOLOGY/Historic-Non-Aboriginal

Period of Significance

Santa Fe Trail, 1821-1880

Significant Dates

1821: Mexican Independence; First mule train to

Santa Fe

1846-1848 Mexican War

1880: Railroad reaches Lamy and beyond; end of the Santa Fe Trail as a commercial route

Significant Person

(Complete only if Criterion B is marked above.)

N/A

Cultural Affiliation

Euro-American

Architect/Builder

N/A

Period of Significance (justification)

The Multiple Property Documentation Form (MPDF) *Historic Resources of the Santa Fe Trail* establishes 1821 to 1880 as the period of significance for all routes of the Trail. Legal international trade between the United States and Mexico began in 1821 with William Becknell's first trip from Franklin, Missouri, to Santa Fe via a mountainous route utilizing either the Raton Pass or Trinchera Pass. The inclusion of wagons on Becknell's second trip, in 1822, led his party to choose a less mountainous route that cut southwest across the Cimarron Desert (The URBANA Group, 1993:E-10) This route across the Cimarron Desert – which includes the **Mora County Segment North of Wagon Mound**– became known as the Cimarron Cutoff and was a significant route for travel between the United States and Santa Fe until the coming of the railroad in 1880 (The URBANA Group, 1993:E-30).

Criteria Considerations (explanation, if necessary) N/A

Santa Fe Trail: Mora County Segment North of Wagon Mound
Name of Property

Mora, New Mexico
County and State

Statement of Significance Summary Paragraph (Provide a summary paragraph that includes level of significance and applicable criteria.)

The **Mora County Segment North of Wagon Mound** site contains remnants of the Santa Fe Trail which exemplify the Historic Trail property type, Commercial Trail and Military Trail subtypes, as described in the Multiple Property Documentation Form (MPDF), *Historic Resources of the Santa Fe Trail, 1821-1880* (The URBANA Group, 1993). The site has National significance under Criterion A in the areas of Transportation, Commerce, and Military use during its period of significance. Due to extensive commercial and military traffic over its period of significance, from 1821 to 1880, the site has associations with the following historic contexts found in the MPDF: International Trade on the Mexican Road, 1821-1846; The Mexican War, 1846-1848; Expanded National Trade following the Mexican Cession, 1848-1865; The Effects of the Civil War on the Santa Fe Trail, 1861-1865; and The Coming of the Railroad, 1865-1880. The site exhibits integrity of location, setting, feeling and association; and, except for cattle grazing, has been largely undisturbed since its period of significance. The trail segments yield information that will contribute to further understanding of the use of the trail and the surrounding landscape by Euro-Americans, thus qualifying for the National Register under Criterion D.

Narrative Statement of Significance

The **Mora County Segment North of Wagon Mound** site contains remnants of the Santa Fe Trail which exemplify the Historic Trail property type, Commercial Trail and Military Trail subtypes, as described in the Multiple Property Documentation Form (MPDF), *Historic Resources of the Santa Fe Trail, 1821-1880* (The URBANA Group, 1993). Segments of the Santa Fe trail crossing the site are part of the Cimarron Cutoff, which has associations with historically important Commercial and Military traffic during its period of significance. The MPDF notes that the Santa Fe Trail was “not primarily a road of emigration” (The Urbana Group, 1993, p. F-6) although some emigration did occur along this route as a small number of wives and children accompanied traders on their commercial ventures or traveled with U.S. soldiers to their posts.

The site has national significance under Criterion A for its association with events that contributed to broad patterns of our national history, including the following historic contexts described in the MPDF: International Trade on the Mexican Road, 1821-1846; The Mexican War, 1846-1848; Expanded National Trade following the Mexican Cession, 1848-1865; The Civil War on the Santa Fe Trail, 1861-1865; and The Coming of the Railroad, 1865-1880. The site had prominence for Native Americans and early Hispanic settlers even before the period of the Trail. An historian has written of Wagon Mound:

“Long before the first Europeans gazed at it in amazement the Plains tribes rendezvoused here for final preparations in visits to the trade marts at Taos, Picuris, Pecos, Jemez and other pueblos. Later it was the place to rest horses and other stock stolen from the Spanish settlements. Here was a spring known as Ojo de Santa Clara to the settlers of Santa Fe, La Canada and Albuquerque, and it was a good place to stop to and from buffalo hunts. It was the dividing line between the claims of the Utes and Jicarillas against the Cheyennes, Arapahoes, Kiowas, Comanches and Kiowa-Apaches.” (Stanley, 1968:3)

The Mora County Segment North of Wagon Mound site also has significance because of the high visibility and the integrity of its trail remnants, which are clearly marked by ruts and swales from a midpoint on the site’s southern boundary to a point just south of its northeast corner. The site viewshed also has significance because of the integrity of views from the site, which strongly evoke the associated feelings felt by early travelers across the prairie as they first sighted and then steered towards the Wagon Mound. As described in the 1963 Historic Sites Survey of the Santa Fe Trail,

“Wagon Mound was the last great landmark on the westward journey across the plains of northeastern New Mexico. It first becomes visible near Point of Rocks, and from the Rock Crossing [of the Canadian River] it was the guidepost for the caravans. Early travelers likened the mountain to a shoe with the toe pointed westward, but soon a trader had an inspired vision and saw in the humped-up hill a wagon bearing southwest with its yokes of oxen lumbering over the horizon. The name he gave it, Wagon Mound, stuck. And a more appropriate simile for the Santa Fe Trail would be hard to find.

Two miles northwest of Wagon Mound is Santa Clara Spring, up a canyon by the same name. Here the traders camped in a natural bowl, sheltered from the winds that unceasingly whip across the open plains. Beginning in the late 1840’s Santa Clara Spring was the scene of frequent Indian ambushes, most famous of which was the Mail Train Massacre of May 1850. Wagon Mound became not only a guide but a warning sign.” (Brown, 1988:138)

Santa Fe Trail: Mora County Segment North of Wagon Mound
Name of Property

Mora, New Mexico
County and State

A contemporary traveler, James F. Meline, 1868, described his journey through the North of Wagon Mound site :

“Canadian (or Red) River, August 16. After our short march of yesterday, we to-day made thirty-three miles, passing nothing remarkable but the Wagon Mound, (so called from its shape), and a rocky descent from a mesa, thickly strewn with scoriae and lava, down to a plain of lower level, for now all is prairies and plain, with the ocean-like swells and undulations for sole relief to the eye.” (Meline, 1868:263)

Meline also commented on the “geographical seclusion and isolation” of the landscape, a feeling that is still evoked by the landscape today:

“Stage lines run over a dozen routes traversing the plains, and where houses and ranches fail, you find a stage station. The route we are travelling, however, is an exception. Nevertheless, it is an old route, opened more than forty years ago. Since 1861 it has been almost abandoned on account of the Indians, and is only just now being resumed. This part of the plains, running down further south into Texas . . . still remains almost in its primitive geographical seclusion and isolation. Maps have done little or nothing for it, and we find it difficult to locate ourselves day by day when we halt. A few remarkable points, such as Burgwin’s Spring, Wagon Mound, and Point of Rocks, are correctly indicated and their distances ascertained, but beyond them, coming this way, we have to feel for our route, and make our own maps and distances.” (Meline, 1868:266)

Besides a route of transportation for commerce, with the founding of Fort Union in 1851, the segments of the trail in the Wagon Mound area also saw heavy military traffic (Brown 1988:138).

The site exhibits integrity of location, setting, feeling and association; and, except for cattle grazing, has been largely undisturbed since its period of significance. The trail segments, in association with other associated sites listed to the National Register in the Wagon Mound area yield information that contribute to further understanding the use of the trail and the surrounding landscape by Euro-Americans. Archaeological prospection, geophysical survey, and metal detector survey of similar trail segments have been shown to reveal associated artifact assemblages, sometimes buried and sometimes not, that can inform on the use of the trail during its period of significance. Though no such surveys have been undertaken on the trail segment under consideration, there is every reason to believe that such an assemblage is present along its course. Therefore, this segment is considered eligible under Criterion D.

Developmental history/additional historic context information (if appropriate)

Reference the Multiple Property Documentation Form Historic Resources of the Santa Fe Trail, 1821-1880.

9. Major Bibliographical References

Bibliography

Brown, William E. *The Santa Fe Trail: National Park Service 1963 Historic Sites Survey*. St. Louis: The Patrice Press, 1988.

Meline, James F. *Two Thousand Miles on Horseback: Santa Fe and Back*. New York: Hurd and Houghton, 1868.

Stanley, F. (pseudonym) [Crocchiola, Stanley Francis Louis]. *The Wagon Mound (New Mexico) Story*. Pep, Texas, August 1968.

The URBANA Group. *National Register of Historic Places Multiple Property Registration Form: Historic Resources of the Santa Fe Trail, 1821-1880*. Washington, DC: US Department of the Interior, National Park Service, 1993.

Santa Fe Trail: Mora County Segment North of Wagon Mound
Name of Property

Mora, New Mexico
County and State

Previous documentation on file (NPS):

- preliminary determination of individual listing (36 CFR 67 has been requested)
- previously listed in the National Register
- previously determined eligible by the National Register
- designated a National Historic Landmark
- recorded by Historic American Buildings Survey # _____
- recorded by Historic American Engineering Record # _____
- recorded by Historic American Landscape Survey # _____

Primary location of additional data:

- State Historic Preservation Office
 - Other State agency
 - Federal agency
 - Local government
 - University
 - Other
- Name of repository: NPS National Trails, Santa Fe, NM

Historic Resources Survey Number (if assigned): _____

Geographic data has been revised to reflect an acreage change of 21.78 from 82.51 acres, the smaller size representing the actual segment boundary; whereas, the 82.51 acres in SR listed nomination represented the entire section of State Trust Land. The UTM's have been revised accordingly to reflect recent NRHP mapping guidance. The Verbal Boundary Description and Justification have been updated to reflect these changes.

10. Geographical Data

Acreage of Property 21.78
(Do not include previously listed resource acreage.)

UTM References [location information redacted IAW federal and state regulations].

(Place additional UTM references on a continuation sheet.)

' '

' '

Verbal Boundary Description (Describe the boundaries of the property.)

Boundary Justification (Explain why the boundaries were selected.)

11. Form Prepared By

name/title Tony Atkin, Principal

organization Atkin Olshin Schade Architects date June 10, 2011

street & number 1807 Second Street, Suite 34 telephone 505.506.7726

city or town Santa Fe state NM zip code 87505

e-mail tatkin@aosarchitects.com

Santa Fe Trail: Mora County Segment North of Wagon Mound
Name of Property

Mora, New Mexico
County and State

Photographs:

Submit clear and descriptive photographs. The size of each image must be 1600x1200 pixels at 300 ppi (pixels per inch) or larger. Key all photographs to the sketch map.

Name of Property: Mora County Segment North of Wagon Mound Segment
City or Vicinity: Wagon Mound
County: Mora
State: New Mexico
Photographer: Daniel Barboa
Date Photographed: 17 June 2011
Location of Original Data Files: 1807 Second Street, Unit 34, Santa Fe, NM 87505
Number of Photographs: 5

Photograph 1 of 5: NM_Mora-County_North-of-Wagon-Mound_0001
[REDACTED] (showing Wagon Mound at center on horizon)

Photograph 2 of 5: NM_Mora-County_North-of-Wagon-Mound_0002
[REDACTED] (showing Wagon Mound and green vegetation that marks location of Santa Clara Spring)

Photograph 3 of 5: NM_Mora-County_North-of-Wagon-Mound_0003
[REDACTED]

Photograph 4 of 5: NM_Mora-County_North-of-Wagon-Mound_0004
[REDACTED]

Photograph 5 of 5: NM_Mora-County_North-of-Wagon-Mound_0005
[REDACTED]

Paperwork Reduction Act Statement: This information is being collected for applications to the National Register of Historic Places to nominate properties for listing or determine eligibility for listing, to list properties, and to amend existing listings. Response to this request is required to obtain a benefit in accordance with the National Historic Preservation Act, as amended (16 U.S.C.460 et seq.).

Estimated Burden Statement: Public reporting burden for this form is estimated to average 18 hours per response including time for reviewing instructions, gathering and maintaining data, and completing and reviewing the form. Direct comments regarding this burden estimate or any aspect of this form to the Office of Planning and Performance Management, U.S. Dept. of the Interior, 1849 C. Street, NW, Washington, DC.

United States Department of the Interior
National Park Service

National Register of Historic Places
Continuation Sheet

Santa Fe Trail: Canada-de-los-Alamos Site

Name of Property

Santa Fe County, New Mexico

County and State

Historic Resources of the Santa Fe Trail 1821-1880

Name of multiple listing (if applicable)

Section number: ADDITIONAL INFORMATION: FIGURES AND PHOTOGRAPHS

Page 1

Figure 1: "Arrival of the Caravan at Santa Fe." Historic illustration in Josiah Gregg's *Commerce of the Prairies*. Edited by Max L. Moorhead. Norman: University of Oklahoma Press, 1954, p. 70.



**United States Department of the Interior
National Park Service**

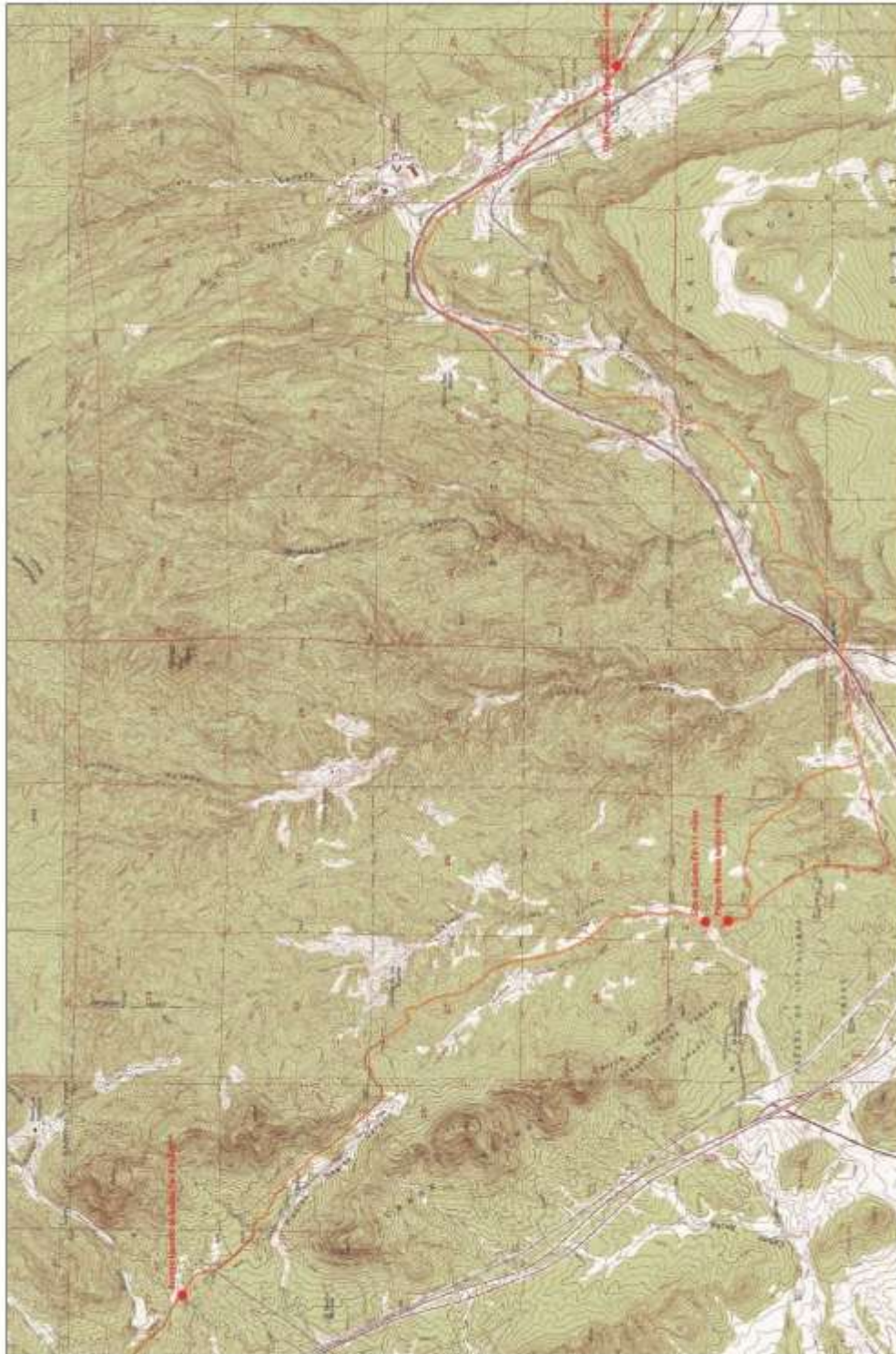
**National Register of Historic Places
Continuation Sheet**

Santa Fe Trail: Canada-de-los-Alamos Site
Name of Property
Santa Fe County, New Mexico
County and State
Historic Resources of the Santa Fe Trail 1821-1880
Name of multiple listing (if applicable)

Section number: ADDITIONAL INFORMATION: FIGURES AND PHOTOGRAPHS

Page 2

Figure 2: Camps and Mileage noted from Thornton's "Military Expedition to New Mexico" (diary), June 15, 1855 - November 20, 1856.



**United States Department of the Interior
National Park Service**

**National Register of Historic Places
Continuation Sheet**

Santa Fe Trail: Canada-de-los-Alamos Site
Name of Property
Santa Fe County, New Mexico
County and State
Historic Resources of the Santa Fe Trail 1821-1880
Name of multiple listing (if applicable)

Section number: ADDITIONAL INFORMATION: FIGURES AND PHOTOGRAPHS

Page 3

[location information redacted IAW federal and state regulations].



Photograph 1 of 9: NM_Santa-Fe-County_Canada-de-los-Alamos_0001
Trail remains. [REDACTED]

United States Department of the Interior
National Park Service

National Register of Historic Places
Continuation Sheet

Santa Fe Trail: Canada-de-los-Alamos Site
Name of Property
Santa Fe County, New Mexico
County and State
Historic Resources of the Santa Fe Trail 1821-1880
Name of multiple listing (if applicable)

Section number: ADDITIONAL INFORMATION: FIGURES AND PHOTOGRAPHS

Page 4



Photograph 2 of 9: NM_Santa-Fe-County_Canada-de-los-Alamos_0002
Trail remains. [REDACTED]

United States Department of the Interior
National Park Service

National Register of Historic Places
Continuation Sheet

Santa Fe Trail: Canada-de-los-Alamos Site
Name of Property
Santa Fe County, New Mexico
County and State
Historic Resources of the Santa Fe Trail 1821-1880
Name of multiple listing (if applicable)

Section number: ADDITIONAL INFORMATION: FIGURES AND PHOTOGRAPHS

Page 5



Photograph 3 of 9: NM_Santa-Fe-County_Canada-de-los-Alamos_0003
Trail remains. [REDACTED]

United States Department of the Interior
National Park Service

National Register of Historic Places
Continuation Sheet

Santa Fe Trail: Canada-de-los-Alamos Site
Name of Property
Santa Fe County, New Mexico
County and State
Historic Resources of the Santa Fe Trail 1821-1880
Name of multiple listing (if applicable)

Section number: ADDITIONAL INFORMATION: FIGURES AND PHOTOGRAPHS

Page 6



Photograph 4 of 9: NM_Santa-Fe-County_Canada-de-los-Alamos_0004
Trail remains. [REDACTED]

United States Department of the Interior
National Park Service

National Register of Historic Places
Continuation Sheet

Santa Fe Trail: Canada-de-los-Alamos Site
Name of Property
Santa Fe County, New Mexico
County and State
Historic Resources of the Santa Fe Trail 1821-1880
Name of multiple listing (if applicable)

Section number: ADDITIONAL INFORMATION: FIGURES AND PHOTOGRAPHS

Page 7



Photograph 5 of 9: NM_Santa-Fe-County_Canada-de-los-Alamos_0005
Trail remains. [REDACTED]

United States Department of the Interior
National Park Service

National Register of Historic Places
Continuation Sheet

Santa Fe Trail: Canada-de-los-Alamos Site
Name of Property
Santa Fe County, New Mexico
County and State
Historic Resources of the Santa Fe Trail 1821-1880
Name of multiple listing (if applicable)

Section number: ADDITIONAL INFORMATION: FIGURES AND PHOTOGRAPHS

Page 8



Photograph 6 of 9: NM_Santa-Fe-County_Canada-de-los-Alamos_0006
Trail remains. [REDACTED]

United States Department of the Interior
National Park Service

National Register of Historic Places
Continuation Sheet

Santa Fe Trail: Canada-de-los-Alamos Site
Name of Property
Santa Fe County, New Mexico
County and State
Historic Resources of the Santa Fe Trail 1821-1880
Name of multiple listing (if applicable)

Section number: ADDITIONAL INFORMATION: FIGURES AND PHOTOGRAPHS

Page 9



Photograph 7 of 9: NM_Santa-Fe-County_Canada-de-los-Alamos_0007
Trail remains. [REDACTED]

United States Department of the Interior
National Park Service

National Register of Historic Places
Continuation Sheet

Santa Fe Trail: Canada-de-los-Alamos Site
Name of Property
Santa Fe County, New Mexico
County and State
Historic Resources of the Santa Fe Trail 1821-1880
Name of multiple listing (if applicable)

Section number: ADDITIONAL INFORMATION: FIGURES AND PHOTOGRAPHS

Page 10



Photograph 8 of 9: NM_Santa-Fe-County_Canada-de-los-Alamos_0008
Trail remains. [REDACTED]

United States Department of the Interior
National Park Service

National Register of Historic Places
Continuation Sheet

Santa Fe Trail: Canada-de-los-Alamos Site
Name of Property
Santa Fe County, New Mexico
County and State
Historic Resources of the Santa Fe Trail 1821-1880
Name of multiple listing (if applicable)

Section number: ADDITIONAL INFORMATION: FIGURES AND PHOTOGRAPHS

Page 11



Photograph 9 of 9: NM_Santa-Fe-County_Canada-de-los-Alamos_0009
Trail remains. [REDACTED]